



Roseville-South Placer (CA) Branch

# Branch Lines

September  
2014

American Association of  
University Women



## Holiday Party

In the Timber Creek Lodge Ballroom

7050 Del Webb Blvd., Roseville, CA 95747

11:30 AM - 1:30 PM

Thursday December 5th



### Featured Speaker from PRIDE Industries, Roseville

PRIDE Industries is a nonprofit founded in 1966 in a church in Auburn, CA with a mission to create jobs for people with disabilities. Through a wide spectrum of services, PRIDE helps people overcome employment obstacles and empowers them to lead productive, independent lives as contributing members of their communities.

Donation of a gift card from Target, Kohl's or Walmart for the hard-working young people with disabilities who work at PRIDE and live in the Roseville area would be appreciated.

**\$21.50 per person**



#### A Chicken Apple Salad with Rolls & Butter **GLUTEN FREE**

Romaine lettuce, sun dried cranberries, candied walnuts and blue cheese crumbles tossed with honey mustard dressing topped with a juicy chicken breast. Warm sourdough rolls and butter.



#### B Honey Mustard Chicken Wrap

Honey mustard chicken with bacon bits, diced tomato, and romaine lettuce wrapped in a tortilla. Potato Salad.



#### C Peppered Roast Beef Sandwich

Roast beef sandwich with creamy horseradish spread, romaine lettuce, tomato and provolone cheese served on a sweet onion roll. Potato Salad.

Includes Coffee or Tea with Cookies and Brownies • No Host Bar (get drinks at bar in Timbers at the Lodge)

Pay by \_\_\_\_\_ Check or \_\_\_\_\_ Credit Card (Visa, Mastercard, Discover, American Express)

Name \_\_\_\_\_ Meal Choice **circle** A B C

Phone \_\_\_\_\_ Email \_\_\_\_\_

\* Total Amount of Charge or Check \$ \_\_\_\_\_

\* Card # \_\_\_\_\_

\* Exp Date \_\_\_\_\_ / \_\_\_\_\_ \*CVV \_\_\_\_\_ \* Zip Code \_\_\_\_\_

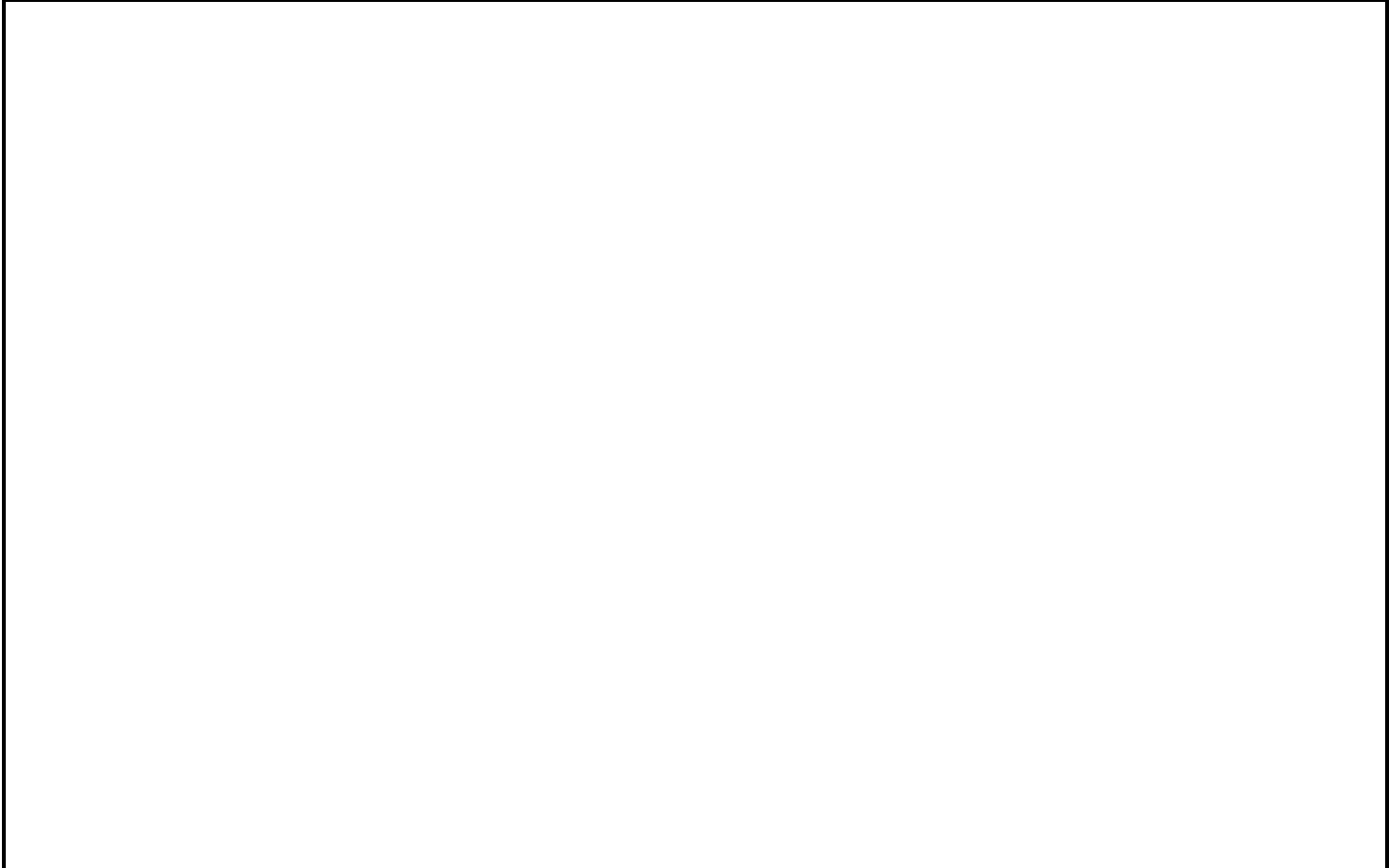
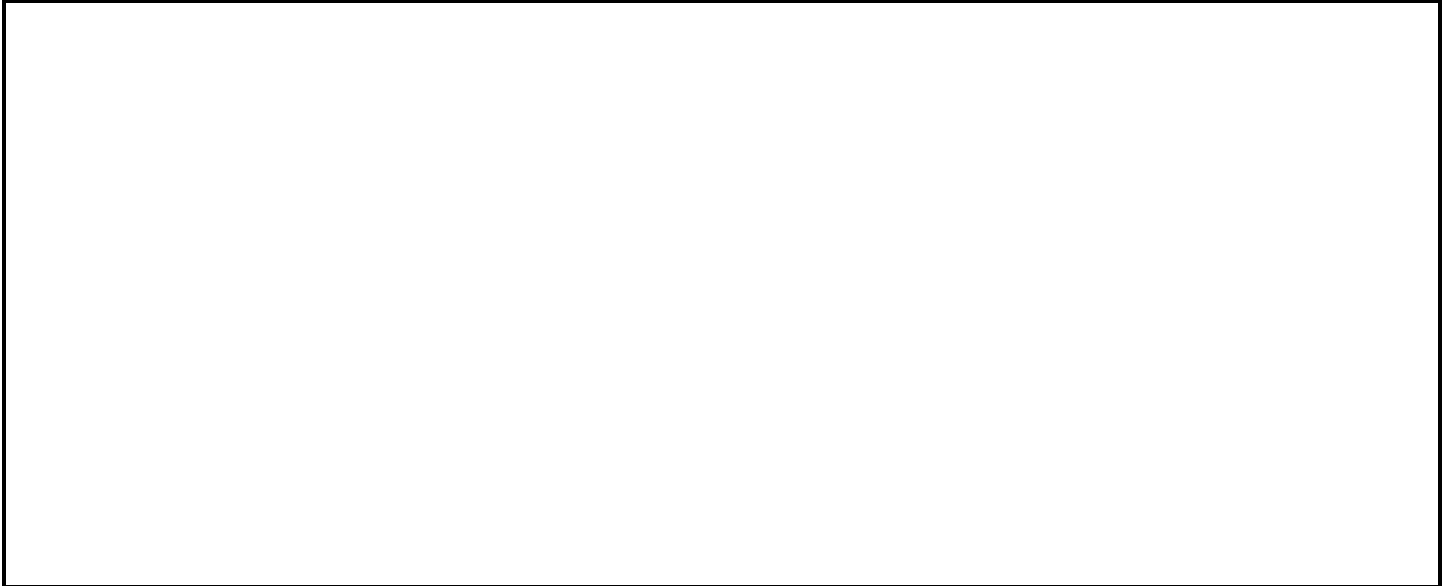
\* Information required for credit card payments.

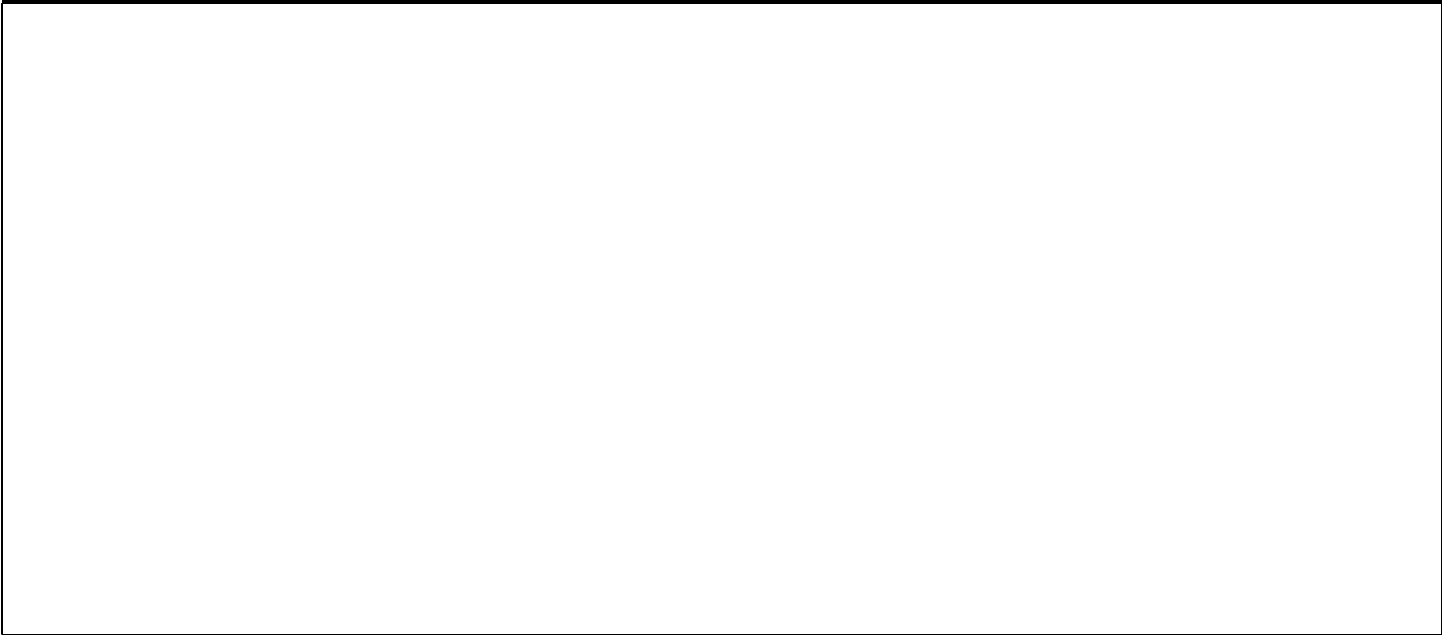
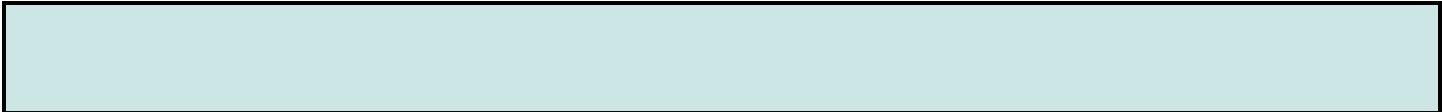
**Reservations due by Friday November 22 • MEMBERS ONLY**

**Mail to Linda Yadao, 7288 Acorn Glen Loop, Roseville CA 95747**

Call Linda with Questions 916-708-5463







**Interest Group Meetings in**

**—Open to all members**

--	--

**(Continued): Interest Group Meetings—Open to All Members**

--

--

--

--



## Neighborhood Group Activities in



**Neighborhood Group Leaders**

(They welcome your call and questions.)

Granite Bay/Loomis/Newcastle/ E. Roseville:

Sally Altman: 791-1763

Rocklin/Springfield: Jerri Yeager: 624-0944

Lincoln: Sue Cofer: 409-2552

SCR 1-6: Connie Frank: 771-5095

SCR 7-13: Sandy Haley: 792-2881

**Join your Neighborhood Group Today!**

## The Welcome Mat

By Pat McLaughlin, New Member Orientation & Participation Co-Director



Information and assistance: Contact Pat McLaughlin at 408-1611 or [pat4mcl@sbcglobal.net](mailto:pat4mcl@sbcglobal.net).

## Birthdays in

**AAUW Roseville-South Placer Branch says  
Happy Birthday and Best Wishes to  
Members celebrating birthdays in**



Is a special friend on this  
Birthday list?  
Why not send them a  
card or email greeting!

Did we miss anyone?  
If we did,  
Congratulations as well!!

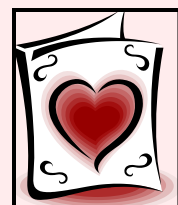
To be recognized in our birthdays column,  
please be sure our Editor has your birthdate—  
month & day, not year.

Contact Editor with information.



**Sunshine Committee Welcomes your Requests**

*Our Sunshine Committee welcomes your requests to send a card or make a friendly phone call to members who are ill, need encouragement, or are to be congratulated. Please contact Sunshine Chairs Edna Dorles at 774-1554 or Dolores Faul at 780-0913 to make your request.*



# Public Policy: Resources and Programs Affecting Our Lives

By Kathleen Crawford and Sue Miller, Co-Directors—Branch Public Policy



~~ *Sue Miller* ~~ AAUW CA Vice President  
Public Policy Director





### Board Meeting Notice

Board Meetings are scheduled for the second Wednesday of each month at 10:00 AM at Raley’s Event Center 1915 Douglas Blvd., Roseville.

**Our next meeting will be on Wednesday,**

Anyone interested is welcome to attend.

Contact Co-Presidents Maria Actis or Sue Cofer with any agenda items.

Misplaced your copy of Branch Lines? No problem!

Contact Editor for a re-send.

OR: The current issue of Branch Lines can be found on our Website. Check it out.

### Visit Our Media Sites

Members will want to visit our Website and Facebook page for a wealth of information about branch events present, past, and future—also to access links to articles of concern for today’s women.

[rosevillesouthplacer-ca.aauw.net](http://rosevillesouthplacer-ca.aauw.net)

[www.facebook.com/aauwrsp](http://www.facebook.com/aauwrsp)



#### Branch Lines Deadline

Deadline for submissions is the 15th of the month.  
Emails preferred to Editor

### AAUW ROSEVILLE-SOUTH PLACER BRANCH LINES

**Adele Tarantino, Editor**  
**Gini Christiansen, Distributor**



Roseville-South Placer (CA) Branch

AAUW advances equity for women and girls through advocacy, education, philanthropy and research.

#### NOTE:

Branch Lines may be printed out in color or in black-and-white.

Your printer will most likely be set for color. You may click on Properties or Preferences and change the setting to black-and-white or grayscale.

It is suggested that you print out the newsletter now so you will have it handy for future reference.

(Appropriate monthly clip art to go here for email copy)

(For paper copies, this space is left blank for address label)