



# Branch Lines

MARCH  
2017

American Association of  
University Women

## WONDERFUL NEW ACCOMPLISHMENT!!

By Jackie Lamb, Woman of Distinction Chair



### **\$ 5500 in CORPORATION AND BUSINESS SUPPORT FOR THE BRANCH**

The Women of Distinction event reached new heights in gaining the support from local Corporations and Businesses. For several years the Branch has been trying to gain more notoriety in the community for the wonderful work we do. It has been a difficult challenge as most of our members are retired, thereby limiting our access to the “working world”. Building on last year’s Women of Distinction, the committee this year asked Carol Garcia, an honoree from last year, to act as our Honorary Chair. She provided great assistance to us in opening doors to the business world in our community. A big THANK YOU TO CAROL. We want to recognize our sponsors:

Sierra College	\$1000
Thunder Valley	\$1000
Community1st Bank	\$ 500
FSB	\$ 500
Hanson McClain	\$ 500
Placer Ranch	\$ 500
Recology	\$ 500
Richland Communities	\$ 500
State Farm (Scott Yuli)	\$ 500

In addition, we sold Ads which raised an **additional \$1025** from nearly 20 small businesses. The committee wants to recognize two members who did the most to bring in ads. They are Lora Finnegan and June Paquette, and thanks to each member that sold an Ad.

It is very exciting to know that the “business network” will no longer say “who or what is AAUW”. Instead they now say: “Oh, yes I know about your group”. AND THE BRANCH HAS RECEIVED OVER \$7000 DOLLARS FOR OUR PROGRAMS AND SERVICES.

(See page 2 for more information on our March 2nd WOD Event.)

## Women of Distinction Dinner



This year we will be honoring the Kings Assistant Coach, Nancy Lieberman, who will also be the keynote speaker. In addition, we are pleased to announce that we will also honor two local women: Robin Trimble, Executive Director of the Rocklin Chamber of Commerce, and Celia McAdam, Executive Director of the Placer County Transportation Planning Agency.

We hope to fill the room in demonstration of our support to these accomplished women who have mentored other women and girls. This is our Annual Fundraiser to support college and high school scholarship programs, Tech Trek, Start Smart, Sierra College activities.

**DATE: THURSDAY, MARCH 2<sup>ND</sup>**  
**TIME: 5:30 p.m.**  
**PLACE: Catta Verdera Country Club**  
**1111 Catta Verdera, Lincoln**  
**(Off of Twelve Bridges Drive)**

### RAFFLE TICKETS

Raffle ticket sales provide our largest profit for this event, which then funds our outreach programs. There are only 1000 tickets available, so chances of winning a prize are good. Raffle tickets will be sold at the door.

**TICKETS: \$10 EACH/THREE FOR \$25**

**GRAND PRIZE: 7-night Caribbean Cruise**  
**for two on Holland America or Celebrity cruises**



### PLUS MORE GREAT PRIZES:

**2<sup>ND</sup> Prize...2 night stay at the Napa River Inn**

**3<sup>rd</sup> Prize....2 night stay at Donner Lake Vacation cabin**

**4<sup>th</sup> Prize....2 night stay at the Chancellor Hotel in San Francisco**

**5<sup>th</sup> Prize...Wood sculpture donated by Lauren Lane Family**

**6<sup>th</sup> Prize...Cakebread Cellars wine**

**7<sup>th</sup> Prize...\$200 gift certificate to Kilaga Spa**

## President's Message By Kathleen Crawford

February is a short month but significant for Speech Trek, a 11 year sponsored activity for this branch. The semi-finals included 15 participants from 7 high schools in our area, and the final competition provided an opportunity to hear 5 finalists. The content quality and delivery of their persuasive speeches was truly impressive. Please thank Michele Stark and her committee for their continuing commitment to this project involving high school young women and men in the South Placer area. Michele's article provides the many details—as President, I am so proud of this project on behalf of the branch membership.



Looking ahead to March, I hope to see many of you at the Women of Distinction Event on March 2. This is our second year, and this fundraising event is growing and reaching out successfully to our business community for support for our philanthropic fundraising. Our board goal is to continue to grow our fundraising with this event as a way to increase our outreach projects—there is a definite need in our South Placer community for increased Sierra College Re-Entry scholarships (ask Betty Manning); Tech Trek camperships (check in with Kim Lillard about her committee's ideas on ways to impact middle school girls nominated by their high schools); High School Scholarships (our second year led by Lora Finnegan currently); and Sierra College Leadership projects (Sue Miller is leading that group). Continuing and Increasing our outreach projects is directly related to our fundraising by our Philanthropy Co-Vice Presidents Dianne Black and Lynn Cooper. The WOD (Women of Distinction) event has been chaired by Jackie Lamb and her incredible committee for a second year! More on WOD will be in the April Branch Lines.

As President, I have been supported by a hard working and effective board team—it is my pleasure to work with this board. If you are approached by the Nominating Committee (chair Sanchia Spandow, members Patricia Lane and Barbara Fraivillig), please consider how you are able to contribute you time and talents—volunteering is one of the most cherished AAUW values. Speak up and help us deliver on our goal: Join us in making a difference in South Placer.



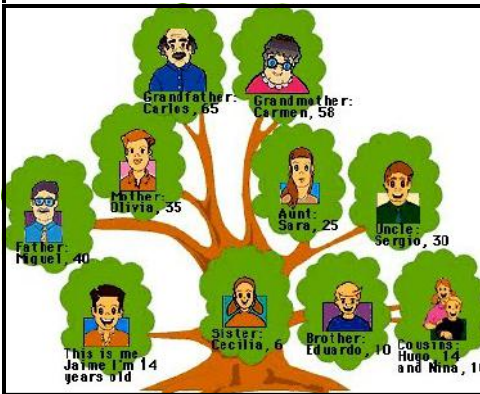
### Tax Deductions

Don't forget your AAUW tax deductions for the calendar year 2016. These include \$70 of your dues as well as the charitable contributions you made to our Branch philanthropies/fundraisers or National's philanthropies.

## Branch Meeting on Family History

### FAMILY HISTORY: WHY IT IS IMPORTANT

Wednesday, April 26, 2:00 to 4:00 p.m.  
at Sierra Pines, 7600 Whistlestop Way  
Sun City Roseville



#### Guest Speakers:

**Alton Sissell** from the Sacramento Family History Center: Why Family History is important and How the Family Search Library Can Help

**Cleo Postle:** Sun City Lincoln Resident—Researching the Family History and Publishing

**Bert Donlon:** Sun City Roseville Resident—Preserving Your Family History

#### Learn about an array of topics and ask questions of our guests:

Family Trees and Medical and Genetic History  
DNA Testing—How it is done and what it costs  
Internet Research—Free sources  
What to do with family collections—archiving, finding a home for all the “stuff”  
Publishing a Book--samples provided  
Donating family materials to museums, libraries, family members  
Interviewing and recording family elders

**A free program open to guests. Bring a family member or friend.**

## February Board Meeting Summary

- Chair Jackie Lamb advised the board on the WOD named honorees, corporate sponsorship outreach, event program ads, dinner ticket and raffle sales.
- VP Finance Kathy Novotny provided the December finance report which is on track for both spending and fundraising.
- Mid-year reports were submitted by Program, Membership, Philanthropy and Outreach VPs as well as by Communications Director.
- Marketing and Publicity job description revision approved and all job descriptions will be posted on branch website.

The March 8 Board meeting will be at 10:00 a.m. at the Raley Event Center in Roseville.

#### SAVE THE DATES:

Annual Meeting: Tuesday, May 9, 2017 at Lincoln Library

Thursday, June 8: Installation Luncheon at Timbers Restaurant, Sun City Roseville



## The Students Came, Spoke, and Folks Listened! Speech Contest a Success

By Michele Stark, Speech Trek Chair

High school students were inspirational! On February 17, about 150 people filled the Presentation Hall, in Lincoln's Kilaga Springs Lodge, to hear five high school finalists compete in our branch's final round of the **Eleanor Stem Allen Memorial Speech Contest**.

For the second year, we partnered with the Sun City Community Forum. This collaboration encouraged members of the community, as well as teachers, students and parents to hear the five finalists.

This year's topic was **"Is it Time to Pass the Equal Rights Amendment (ERA)?"** First introduced in Congress in 1923, why hasn't the ERA become law yet? Following the contest, many enjoyed a lovely reception hosted by the branch program committee.



President Kathleen Crawford,  
Winner Sarah Murphy, David Allen



Finalists: Jared Parris, Gabrielle Camba, Kavana Gonur., Evelyn Bartholomew, and 1st place winner Sarah Murphy (far right)

**The five finalists, from 4 high schools, each received cash awards, sponsored by Gray Allen, and presented by his son, David Allen.**

**1st place:** \$850, Sarah Murphy, senior at Whitney High School  
**2nd place:** \$550, Evelyn Bartholomew, sophomore, Whitney High  
**3rd place:** \$300, Kavana Goner, sophomore at Granite Bay HS  
**Runner Up:** \$100 Gabrielle Camba, 9th grade, Lincoln  
**Runner Up:** \$100, Jared Parris, sophomore, Antelope

(L. to R.) Michele Stark, Speech Trek Chair, Sarah Murphy, Joanne Murphy (mother), teacher Ben Barnholdt

Judges: Lincoln Mayor Peter Gilbert, Janice Marcum, Marilyn Clark.



As our final winner, **Sarah Murphy** has an opportunity to participate in the AAUW CA State Finals in April.

**NOTE: At the semi-final contest** on February 9, 15 students competed for an opportunity to advance to the final round. Seven high schools were represented: Antelope, Granite Bay, Lincoln, Whitney, Roseville, Rocklin, and Woodcreek.

## The Welcome Mat

By Dotti May, New member Orientation Chair

**Welcome to the newest  
AAUW Roseville South-Placer Branch member**

**Kathy Swift** resides in Lincoln with her husband Riley. She has a Masters in Speech Pathology from CSU-Chico. Kathy came to us via National AAUW. She joined our branch in February 2017. **Welcome!!!**



## KUDOS TO !!

Kudos to all of you **Interest Group and Neighborhood Group Chairs** for your efforts each month to keep our members engaged in interesting and challenging activities that give them a chance to interact with other Branch members and in some cases become more familiar with the South Placer community..

Also, our many thanks to **Patricia Glover** for her wonderful work sending cards and messages as branch Sunshine Chair.

### Sunshine Chair Welcomes Your Requests

**Patricia Glover**, our Sunshine Chair, welcomes your requests to send a card or make a friendly call to members who are ill, need encouragement, or are to be congratulated.

Contact information is in Branch Handbook

**ALSO:** Please let our **Communications Chair, Susan Hall**, know of illnesses, accidents, deaths of spouses/SOs, or members' children. She will convey this information to our Sunshine Chair.



### *In Memoriam*

Longtime Branch member **Arlene Lundblad** passed away in January after a long illness. Arlene was active for many years in interest groups and Branch fundraising, and she helped recruit many of our most active members into the Branch.

Branch member **Norma Vuletich** lost her husband Ken after a long illness. She will appreciate your best wishes and prayers.

## ANOTHER BIG TURNOUT FOR TECH TREK NOMINATIONS

By Kim Lillard, Tech Trek Chair

The scholarship nomination deadline has now passed, with teachers and counselors from fourteen schools nominating twenty-four students for this year's consideration for the Roseville-South Placer Branch's Tech Trek scholarship. As always, we wish we could send them all, but our committee will once again narrow this impressive field of seventh grade girls down to just six future campers for a week at UC Davis. We greatly appreciate the schools allowing their teachers to participate in our scholarship program and hope they continue to do so for many years to come.



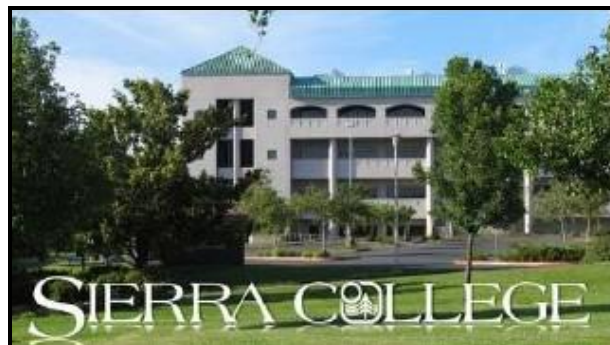
The next deadline hovering in the wings is the Student Application form, due on February 27th. The nominated girls must answer written questions and compose an essay in which they communicate what draws them to want to excel in the STEM fields. The Tech Trek committee will meet Saturday, March 4th, to evaluate the teacher nominations, student applications and essays, and to choose the students to be interviewed on March 18th. We wish all the nominees good luck this year.

**For more information on Tech Trek, please call or text Kim Lillard.**

## Sierra College Leadership

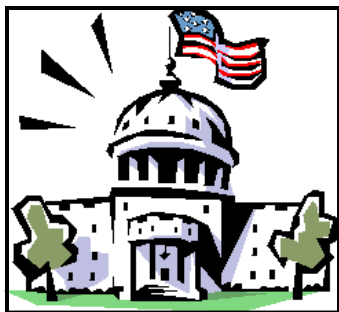
By Sue Miller, Chair—Sierra College Leadership Program

At the national level, the **\$tart \$mart** program has undergone a major revision. At Sierra College, members of the Sierra College Leadership Committee tested the new curriculum in the fall semester and have recently completed another revision to better accommodate the needs of our college partner. Thanks to **Linda Stockwell**, **Michele Stark** and **Sue Cofer** for their work in making \$tart \$mart even better! They have already scheduled a number of presentations for this semester.



With Sierra administration and faculty focusing on making changes that will improve students' ability to transfer to 4-year colleges, the decision was made not to do an AAUW Elect Her this semester. However, we will continue to support deserving young women who want to grow their leadership skills. We are encouraging applications from women student leaders to attend AAUW's National Conference for College Women Student Leaders (NCCWSL) May 31-June 3, 2017 at the University of Maryland. Our branch has budgeted support for 2 students to attend NCCWSL and will be interviewing and selecting them this month.





## We Must Keep an Eye on Washington!

Despite record opposition, **Betsy DeVos** was confirmed as Secretary of Education when Vice President Pence cast the tie-breaking vote. Senate offices received thousands of calls and emails from constituents, jamming phone lines on Capitol Hill and showing bipartisan, widespread opposition to a nominee whose views do not align AAUW's priorities. We can feel proud of our California Senators Feinstein and Harris for voting against this nomination.

During her hearing, DeVos was asked by several senators about her thoughts on her support for Title IX – the federal law that prohibits sex discrimination in schools receiving federal funding. On all fronts, she failed to demonstrate a grasp of the Secretary of Education's role in protecting the civil rights of students and failed to offer clear, unequivocal support for upholding those federal laws. DeVos also is a strong proponent of charter schools, expressing opinions inconsistent with AAUW Public Policy positions. AAUW cannot stand for a Secretary of Education who does not fully support upholding and enforcing civil rights and other protections for all our students.

**Now more than ever, we must hold our legislators accountable for votes they cast and demand that they protect the rights of women and girls. On many fronts women stand to lose as Congress moves ahead on reproductive freedom, the Affordable Care Act, voting rights and other issues important to us. We need to increase our advocacy efforts!**

If you haven't already, sign up for AAUW Action Alerts. Go to the national website: [www.aauw.org/what-we-do/public-policy/two-minute-activist/](http://www.aauw.org/what-we-do/public-policy/two-minute-activist/) and sign up. AAUW will notify us when it is time to make contact with our elected officials at both the national and state levels. In California, we will soon determine the bills AAUW CA will support or oppose, and email advocacy will be important here as well.

## Amazon Smile: A new and easy way to help the branch!

So many members order from Amazon, some even using Amazon prime. Now there is a way to buy your usual items and let Amazon give back to our non-profit charitable funds.

### **When you are ready to place an Amazon order:**

Find the "Select a charity" space and type in AAUW Roseville South Placer. Then click the select button. Now you are on **Amazon Smile**. You have just entered Amazon through a different portal. Shop and place your order in the usual way, and Amazon takes care of the rest, giving back one-half a percent to our branch--not a lot, but every few dollars help, and you have no extra charges. You already have your credit card and personal information on file and secured with them, so you are not exposing any information to a third party. If you are an Amazon Prime user, the process works the same way.

If you are not an Amazon user but would like to be, you will be asked to set up an account. Amazon walks you through the process. If you are a regular Amazon buyer, you already know the procedures. Eventually, the branch hopes to have a similar connection with other businesses that will work the same way. **Keep shopping and help our worthy causes!**





## Interest Group Meetings in March--Open to all members

### Casual Gardeners

**Wednesday, March 1, 9:00 a.m.**

We have scheduled our trip to UC Berkeley Botanical Garden for March 1, 2017.

We will have a "self-guided tour," as we don't have the ten needed attendees to warrant a docent.

We will meet in the Office Depot parking lot on Douglas Blvd. and North Sunrise Blvd. at 9:00 a.m.

After the tour, we will enjoy lunch at "Skates on the Bay" in Berkeley.

If you are interested in joining us, please let Pat Tolleson know. Check out the following—

<http://botanicalgarden.berkeley.edu/>  
will definitely whet your appetite!

### Wednesday Evening Book Group

**March 1, at 6:30 p.m.**

Meeting at the Lincoln home of Peggy Elo

Peggy reviews: The Boundary Stone  
by Gail Halverson

Please RSVP to Peggy if you plan to attend.

April book: Hillbilly Elegy by J.D. Vance

Further information: Contact Pat Morgan.

### Mah Jongg

**Thursday, March 2 and 16, at 1:00 p.m.**

Group plays twice monthly in members' homes on first and third Thursdays.

Players will be contacted by  
Coordinator Joyce Wade.

Or: RSVP to Joyce if you plan to attend.

Newcomers are welcome at the teaching table.

### Party Bridge

**Wednesday, March 8, at 1:00 p.m.**

Group meets monthly on the second Wednesday.

Questions & RSVP: Leslie McNeill.



### Duplicate Bridge

**Friday, March 10, at 1:00 p.m.**

Barbara Gorden will be our March hostess.

See branch handbook for her address in Lincoln.

Please let her know if you are able to attend.

If you would like to join or be a substitute in this group, contact Sandi Roullier.

### Great Decisions

**Friday, March 10, at 10:00 a.m.**

Raley's Event Center, 1915 Douglas, Roseville

Topic: "U. S. Foreign Policy and Petroleum"

Presented by Clare Ravi. DVD & Discussion.

Further info: Contact Elsie Gaura.

### Women of the World

**Monday, March 13 at 10:00 a.m.**

Meeting at Lincoln Event Center,  
39 Lincoln Blvd., Lincoln.

Dianne Black reviews "Missoula:

Rape and the Justice System

in a College Town" by John Krakauer.

Contact Substitute: Elsie Gaura

### Hand and Foot Card Game

**Tuesday, March 14, at 1:00 p.m.**

Group meets on the second Tuesday monthly at the Granite Bay home of Darlene Thomas.

RSVP if you plan to attend.

For information about our group, contact Darlene.

### Wednesday Book Group

**March 15, at 10:30 a.m.**

Raley's Event Center, 1915 Douglas, Roseville

Clair reviews: Mr. & Mrs. Doctor

by Julie Iromuanya

April book: A Man Called Ove

by Fredrik Backman

Questions: Contact Nancy Taylor.

### Wine Appreciation Group

No information yet for March.

Members will be contacted.

Questions? Contact Diane Madden.

## March Interest Group Meetings-- Open to All Members

### **New Member Interest Group**

**Thursday, March 16, at 1:00 p.m.**

Group meets monthly on the 3rd Thursday hosted by Dotti May in Lincoln.

New members and their mentors are encouraged to attend; however, all branch members are welcome. Its purpose is to integrate new members through socializing, mentoring, and education about branch activities.

March Topic: Sierra College Leadership  
Presented by Sue Miller,  
State Co-chairwoman of Public Policy.  
Please RSVP to Dotti if you plan to attend.

### **Movies on Monday**

**March 20, at 11:30 a.m.**

Meeting at the Lincoln home of Sue Cofer  
Our film: "The Intern"—a delightful look at how we "senior citizens" who, full of vim, vigor, and experience, can shepherd a younger person in their work with hard-earned wisdom.

Bring your lunch. \$2 "at the door" pays for chips, beverage, and movie rental.

Seating is limited to 15 so please RSVP early.

For Reservations: Contact Carol Mahany.

Further Group Information: Contact Coordinators Darlene Thomas or Sue Cofer.

### **Tuesday Book Group**

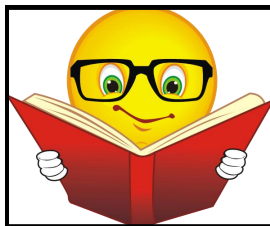
**March 21, at 10:30 a.m.**

Lutheran Church, 6365 Douglas Blvd., Granite Bay

Norma reviews: The Boston Girl by Anita Diamant.

April book: Dead Wake: The Last Crossing of the Lusitania by Eric Larson

Questions: Contact Patricia Glover.



### **Couples Dinner Group**

No group event in March.

We will attend the WOD dinner on March 2nd.

For information about our group, contact Barbara Gorden or Fran Rice.

### **Mexican Train**

**Monday, February 27, at 1:00 p.m.**

Plans not yet finalized for March game.

Hostess information will be sent by email.

Further questions: Contact Joan Urry.

Please remember to bring your nickels.

### **Women's Gourmet Group**

**Monday, March 27**

Women's Gourmet will be hosted by Diane Bogush at the home of Karen Allen in Lincoln.

Diane will be sending out the menu in March.

Questions may be directed to Karen Allen.

### **Scrabble Group**

**Tuesday, March 28, at 1:00 p.m.**

Scrabble meets on the 4th Tuesday.

In March at the home of Sandy Haley in Sun City Roseville.

Please RSVP to Sandy if you plan to attend.

### **Audio Book Exchange**

No regular meetings—just sharing of books on CD throughout the year.

If interested, contact Coordinator Nancy Taylor.



## March Neighborhood Groups Events

Schelly Jensen, Groups Coordinator

**Granite Bay/Loomis/Newcastle/E. Roseville/Orangevale:** We will meet on our usual 3rd Friday, **March 17th**. The restaurant will be chosen at our February luncheon. Members will be contacted by email. For further information about our group, please call or email **Sally Altman**.

**Rocklin/Springfield:** Our group will meet at Venita Rhea's Restaurant in Rocklin at 10:00 a.m. on **March 23rd**. Let **Leslie McNeill** know if you plan to attend. Further information about our group: Call **Jerri Yeager**.

**Lincoln:** Everyone is encouraged to attend the Women of Distinction Dinner on **March 2nd**. In April, we will meet at Siinos Restaurant, 815 Twelve Bridges in Lincoln, for lunch at 11:30 a.m. on **Tuesday, April 4th**. Following lunch, we will take a short walk to a new business, Honey Paperie, to check out new gift ideas and party goods for Spring. Please RSVP to **Sue Cofer** by April 1st if you plan to attend.

**Join your  
Neighborhood Group  
Today!  
For further information  
Contact Coordinator  
Schelly Jensen.**



**SCR Villages 1-8 + Northwest Roseville:**

We will be celebrating St. Patrick's Day early on **March 14th** at the home of **Ann Mitchell**, Eskaton Village, Roseville. Space is limited to 8, so please RSVP ASAP to Ann for this very special Irish luncheon. Wear green if possible. Questions about our neighborhood group: contact Connie Frank.

**SCR Villages 9-13 and Southwest Roseville:**

In lieu of a neighborhood gathering, everyone is encouraged to attend the Women of Distinction Dinner at 5:30 p.m. on Thursday, **March 2nd**. See page 2 in this issue of Branch Lines for details. Hope to see you there!

**Neighborhood Group Leaders**

(They welcome your questions about our groups)

Granite Bay/Loomis/Newcastle/E. Roseville &  
Orangevale: Sally Altman  
Rocklin/Springfield: Jerri Yeager  
Lincoln: Sue Cofer  
SCR Villages 1-8 + Northwest Roseville:  
Connie Frank  
SCR Villages 9-13 + Southwest Roseville:  
Sandy Haley



### Lincoln Neighborhood Group—Help Wanted



The Lincoln Neighborhood group is very large and Sue Cofer would appreciate some help in organizing the group's activities.

If you would like to help Sue with the group's activities, please contact her with your ideas.

## Board Meeting Notice

Board Meetings are scheduled for the second Wednesday of each month at 10:00 AM at the Raley's Conference Room.

**The March 8 Board Meeting is at 10:00 AM at Raley's in Roseville.**

Anyone interested is welcome to attend. Please call President Kathleen Crawford with your discussion item a week before the meeting so you can be placed on the agenda. Thank you.

Misplaced your copy of Branch Lines?  
No problem!

Contact Editor for a re-send.  
OR: The current issue of Branch Lines can be found on our Website. Check it out.

## Visit AAUW Media Sites

Hold CTRL on keyboard, then click on addresses below to visit our Branch Website and Facebook page, as well as State and National sites, for a wealth of information about AAUW events present, past, and future—also to access links to articles of concern for today's women.

<http://rosevillesouthplacer-ca.aauw.net/>

<http://www.aauw.org/>

<http://www.aauw-ca.org/>

<http://www.facebook.com/aauwrsp/>



To access the Members Only section on our Branch Website, you will need to use the branch password.

**Branch Lines Deadline: 15th of the month**

## AAUW ROSEVILLE-SOUTH PLACER BRANCH LINES

**Adele Tarantino, Editor**  
**Gini Christiansen, Distributor**



Roseville-South Placer (CA) Branch

**AAUW advances equity  
for women and girls through  
advocacy, education, philanthropy  
and research.**

## NOTE:

Branch Lines may be printed out in color  
or in black-and-white.

Your printer will most likely be set for color. You may click on Properties or Preferences and change the setting to black-and-white or grayscale.

It is suggested that you print out the newsletter now so you will have it handy for future reference.

